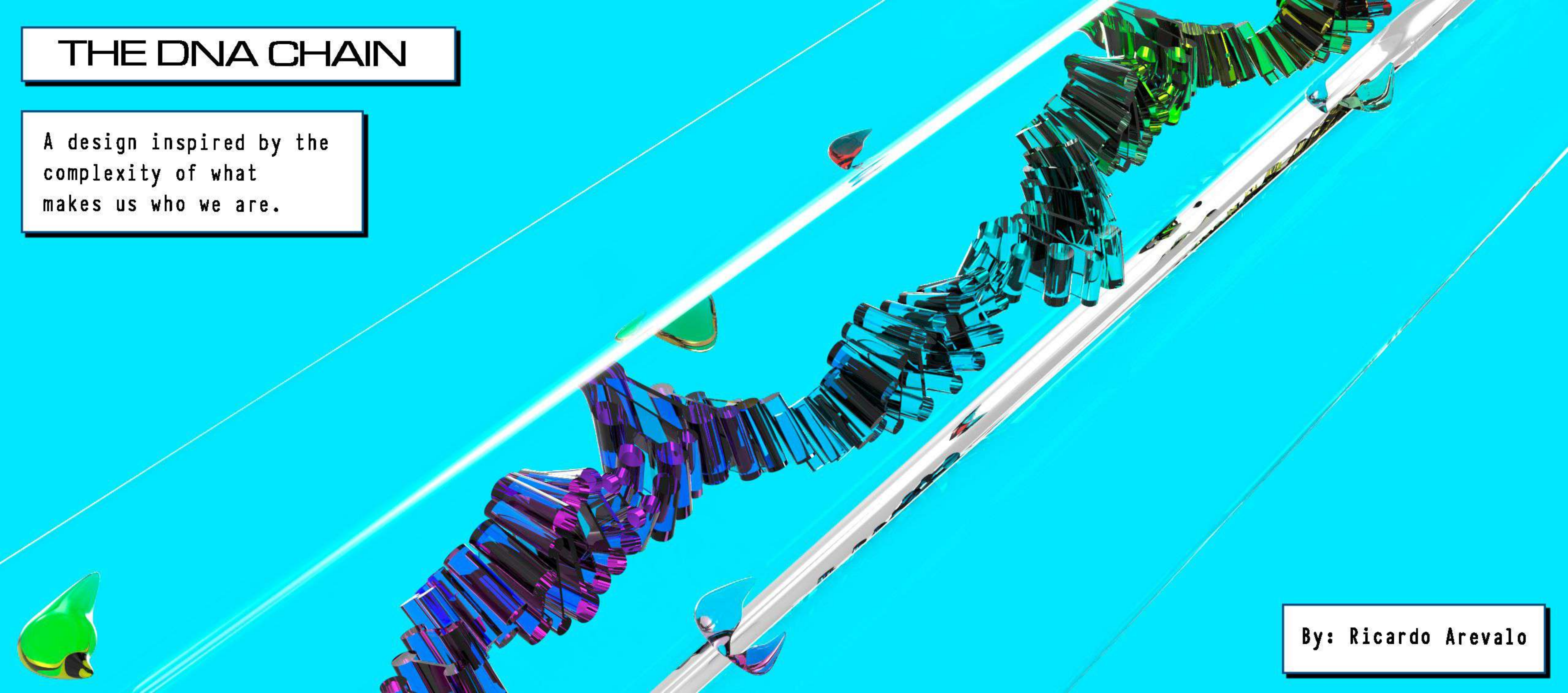


THE DNA CHAIN

A design inspired by the complexity of what makes us who we are.

By: Ricardo Arevalo



"Highlighting the possibilities of digital creation and its applications to the current design environment."

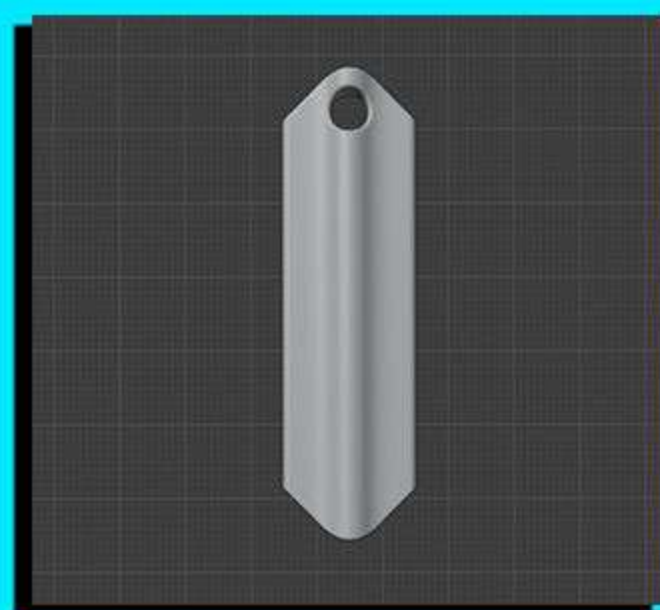
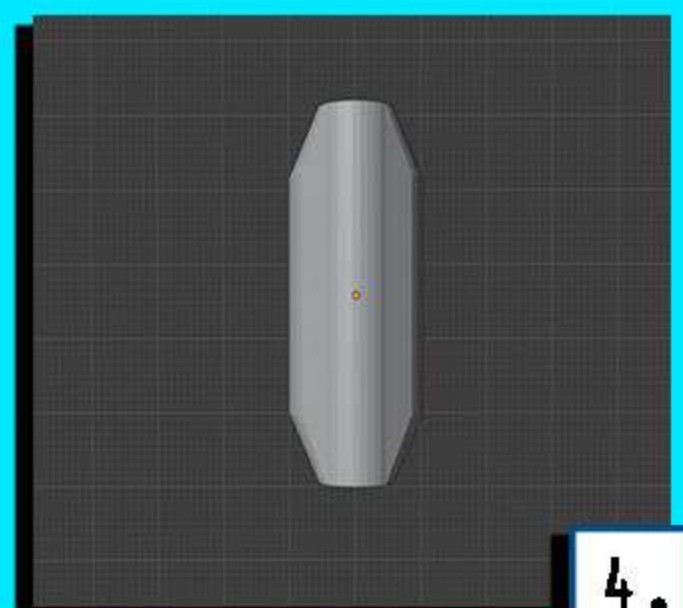
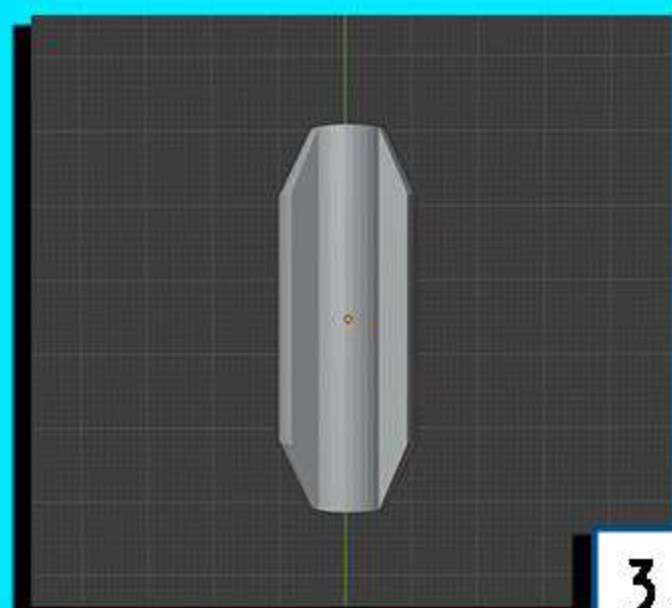
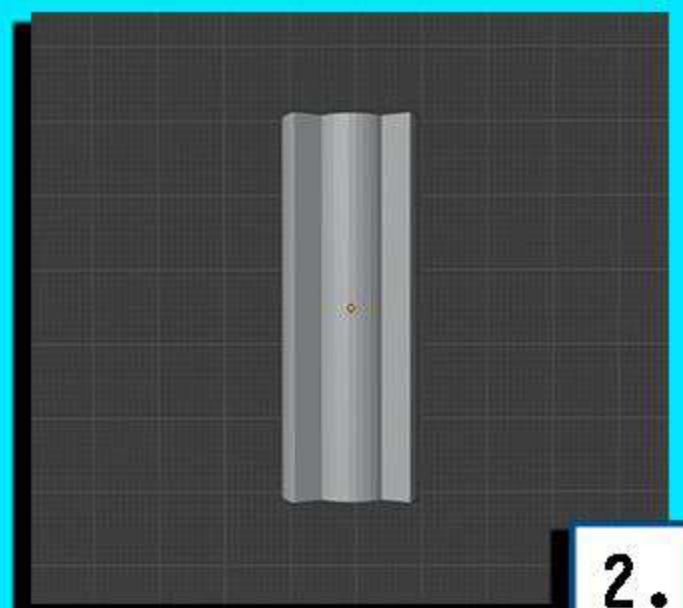
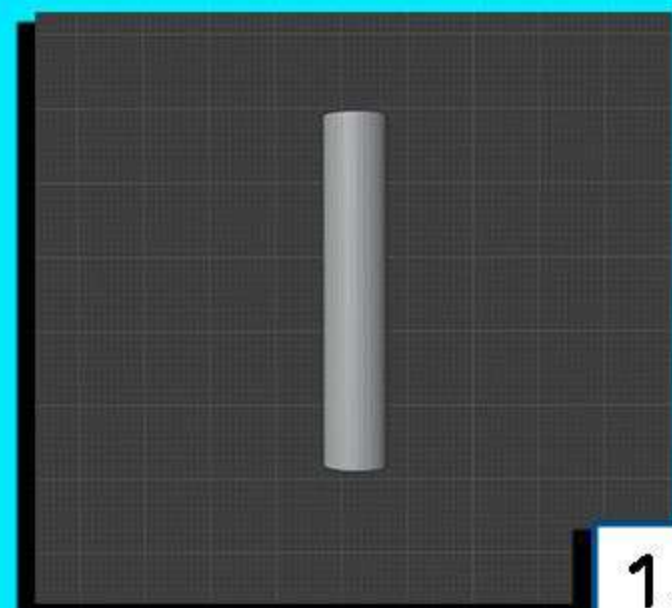
Acknowledging the importance of diversity, integrating several components to create a dynamic pattern that complements a solid structure.

Exposing the fragility of humans through a piece of translucent glass.

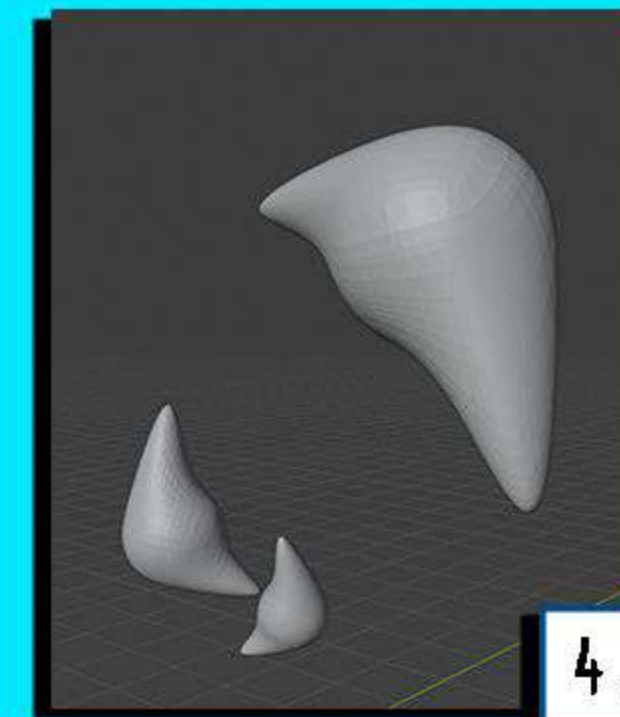
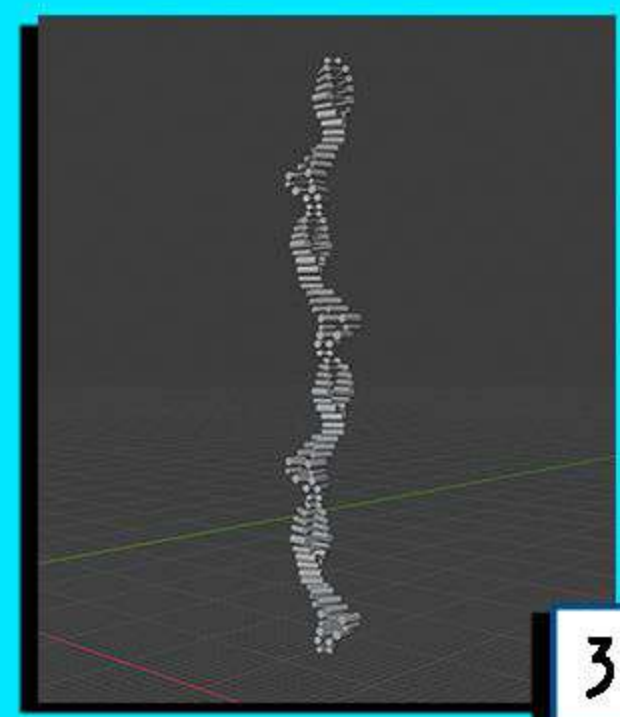
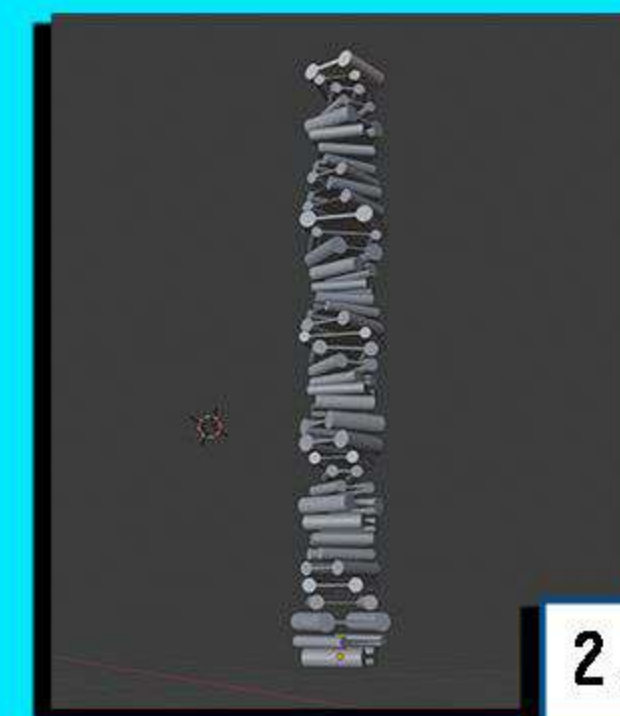
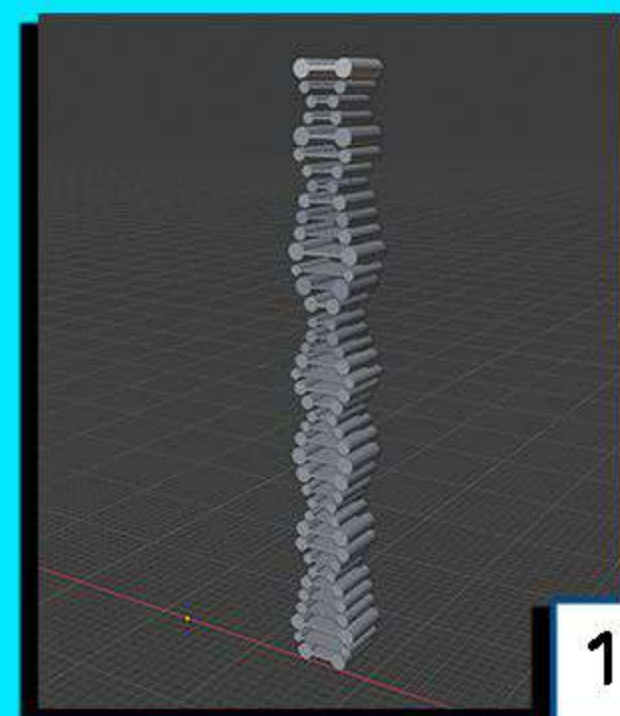
Based on the molecule that defines our uniqueness and authenticity.



Iterations over the solid.



Iterations over the pattern.





Render 1.



Render 2.



Render 3.



"The DNA Chain" is a piece inspired by the complexity of human beings. This neckless looks for portraying the uniqueness we have as humans despite we all share the same basic organic components. The design of "The DNA Chain" is based on the structure of the DNA molecule, which is the one in charge of displaying all the genetic material contained in our cells.

The piece consists of a translucent shape that contains more than 40 different bodies separated one from the other, which also were coloured individually and rotated to create a magnificent pattern.

This piece explores the fabrication of jewellery using 3D printing technology and also displays the possibilities that this revolutionary technology can offer to designers in several areas of the industry.

Furthermore, "The DNA chain" shows how accurate and detailed 3D printings can be, demonstrating how technology is actually reducing the limitations of any type of design.

Ricardo Arevalo

